



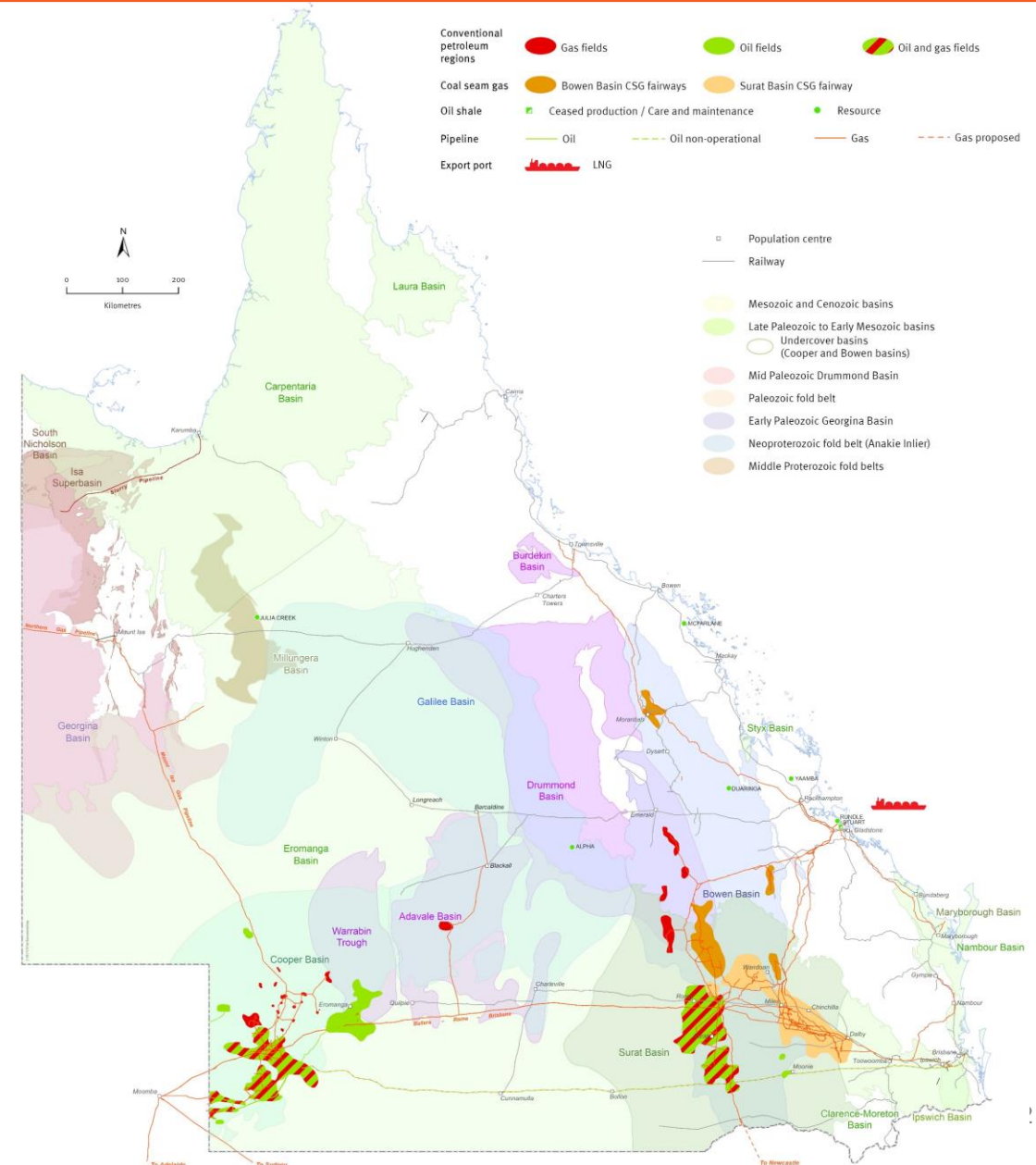
GasFields Commission Queensland

LGAQ Update – 18 November 2021

GFCQ OPERATING ENVIRONMENT

The GasFields Commission's Mandate:

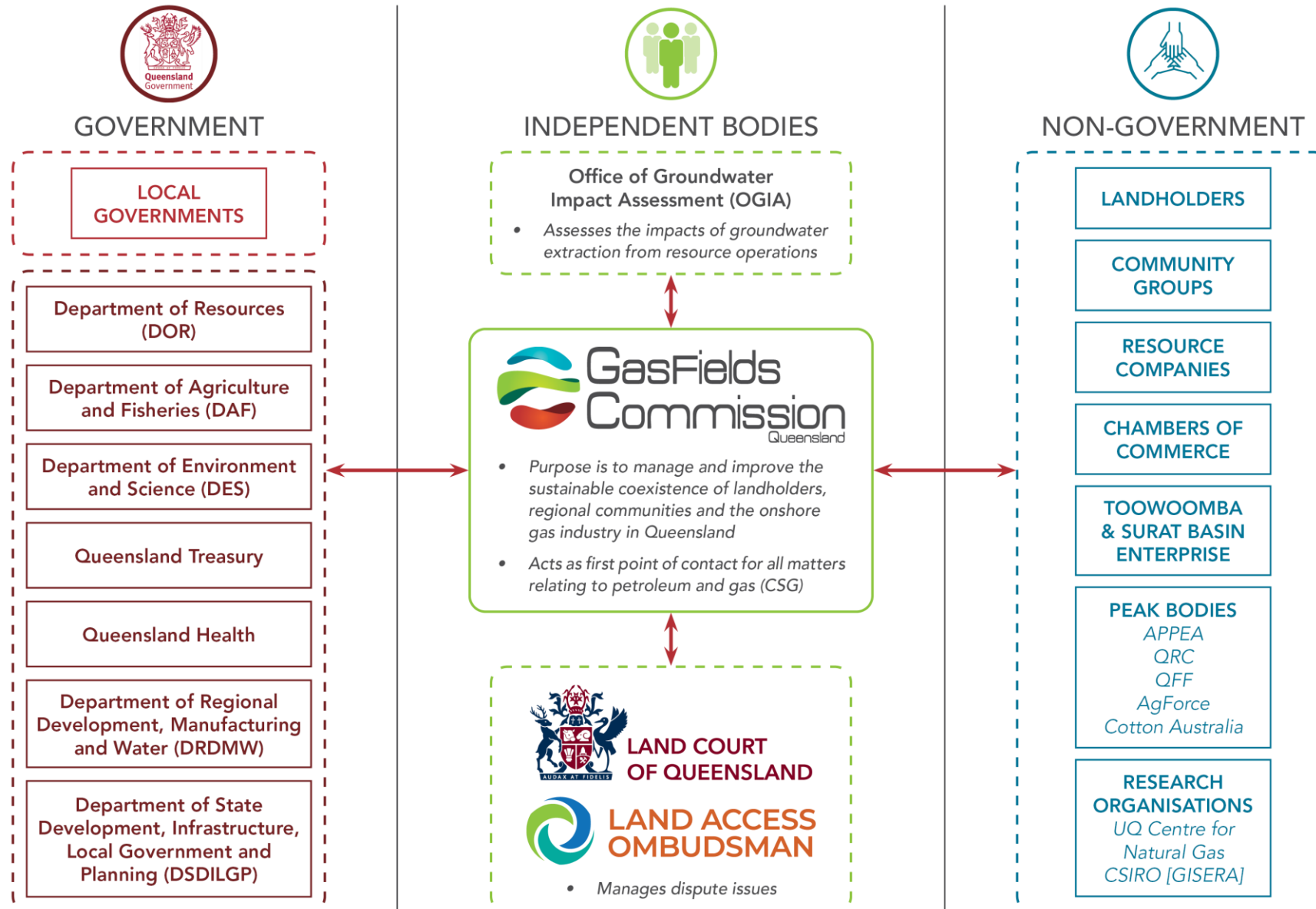
- Commission was born out of the rapid development of the CSG to LNG sector
- Social license and coexistence central to the success of CSG sector
- Commission has played a key role and remains focused on improving sustainable coexistence
- The Commission's mandate includes all onshore gas activities in Queensland
- Commission role and function must continue to evolve



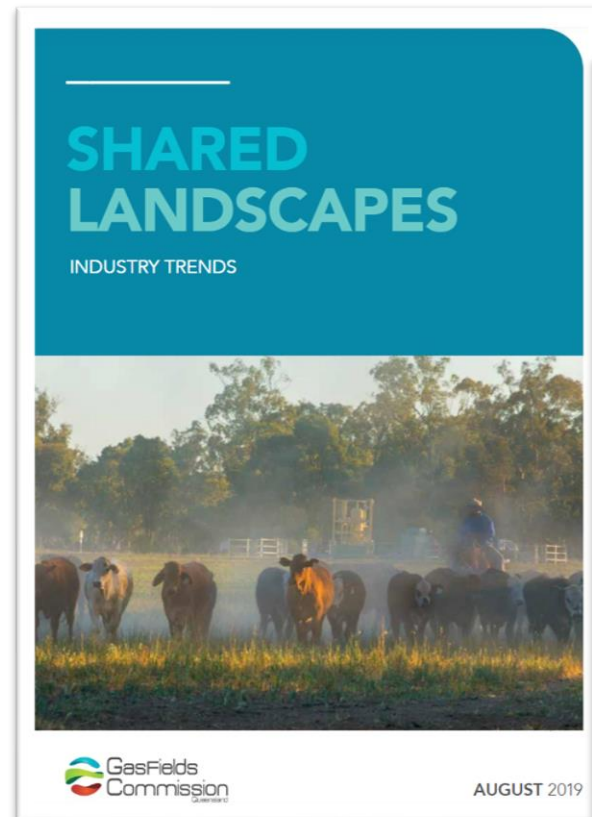
- **PURPOSE** to manage and improve the sustainable coexistence of landholders, regional communities and the onshore gas industry in Queensland
- The Commission's strategic objectives in line with its legislative functions are:
 - **FACILITATE** effective stakeholder relationships, collaborations and partnerships to support information sharing related to the onshore gas industry
 - **REVIEW** the effectiveness of government entities in implementing regulatory frameworks that relate to the onshore gas industry
 - **ADVISE** ministers, government entities and the onshore gas industry on matters related to sustainable coexistence, leading practice and management of the onshore gas industry
- Coexistence between the gas industry, the agriculture sector and regional communities/landholders requires continuous attention and focus

WHO DOES GFCQ WORK WITH?

GASFIELDS COMMISSION QUEENSLAND – OUR STAKEHOLDERS



- Facilitates coexistence by ‘sharing information’ and collaborating with a broad range of stakeholders – we are only as successful as our relationships / partnerships
- Transparency through information is fundamental to building trust, respect and enduring relationships
- Shared Landscapes Report is core to this ‘information sharing’ function
- Previous Shared Landscapes publications include:
 - Industry Trends (2019)
 - Industry Snapshot (2021)



- **UPCOMING PUBLICATION**

- *'Web based' Shared Landscapes - Industry Trends (June 2022)*
- The evolution of the Shared Landscapes Report (due to be released mid-2022) will see the Commission develop an interactive web-based report to make the data more 'digestible' for our regional stakeholders
 - Includes long-term industry trends (10- 12 years), where data permits
 - Includes some agriculture industry data where relevant - not as a comparison but to provide an overview of how the two industries coexist and interact
 - Updates planned every year

SHARED LANDSCAPES REPORT CONTENT



173M
hectares (ha) is the
total land area
of Queensland



4,504
**Conduct and Compensation
Agreements (CCA)** were
in place in Queensland
in FY20, with more than
**\$702 million paid in total
cumulative compensation**



15,890
**CSG and petroleum
wells had been drilled**
in Queensland
as of 30 June 2020



In total, approximately
22,000
wells projected to
be drilled by 2050

As of 30 June 2020:



3.6M ha
(2.1%) of Queensland
is currently **under granted
petroleum production
licence (PL)**



12,331 km
of **petroleum pipeline
licences (PPLs)** that
have been constructed
and are in operation



12,356
targeted CSG
with a total of 8,314 CSG
wells currently producing
in Queensland

975

**petroleum and CSG wells
were drilled** in Queensland
in FY20



16M ha
(9.5%) of Queensland
is **under granted authority
to prospect exploration
tenure (ATP)**



810,300 ha
of petroleum and gas tenures
granted **must supply the
Australian domestic gas
market**



3,534
**targeted conventional
and other unconventional
resources**

**12% of the 912 CSG wells
drilled were
hydraulically fractured**

**41% of the 63 petroleum wells
drilled were
hydraulically fractured**

30%

of **Western Downs
Regional Council**
is under PL*

CSG and petroleum well footprint
covers **0.16% of land surface**

23%

of **Maranoa
Regional Council**
is under PL*

CSG and petroleum well footprint
covers **0.05% of land surface**



The majority of **wells
hydraulically fractured
during FY20** occurred
in the Banana, Central
Highlands, Maranoa
and Bulloo Shire LGAs

Benefits of the Gas Sector

- Previous sections explained the “why” – now it's the “so what”
- The gas sector provides economic and social benefits to local regional communities and Queensland.
 - Direct contributions
 - Local spend – local business and community organisations
 - Employment and wages
 - Royalties

Local government information

- Data opportunities



- Building trustworthy relationships
- Open and honest lines of communication
- Balanced and fulsome reporting that is meaningful / relevant to all GFCQ stakeholders
- Transparency in information sharing

- **Importantly** the Commission is seeking feedback and input from all LGAs where gas development activities are occurring / soon to occur - including;
 - relevance of data being reported;
 - value of economic contributions from resource companies to regional communities; and
 - examples of LGA's engagement with resource companies (both positive and negative) and how the gas industry has affected your LGA.
- **SHARED LANDSCAPES SURVEY:** <https://www.surveymonkey.com/r/Shared-Landscapes>

OUTLOOK OF GAS DEVELOPMENT

- The gas industry is an important component of the Queensland economy
- Activity in the established development precincts will continue
- The Queensland State Government supports the continued development of the gas industry
- New and emerging areas such as the Northern Bowen and Galilee Basins
- Scale of development seen in the Surat Basin will most likely never be repeated
- The Commission is here to help

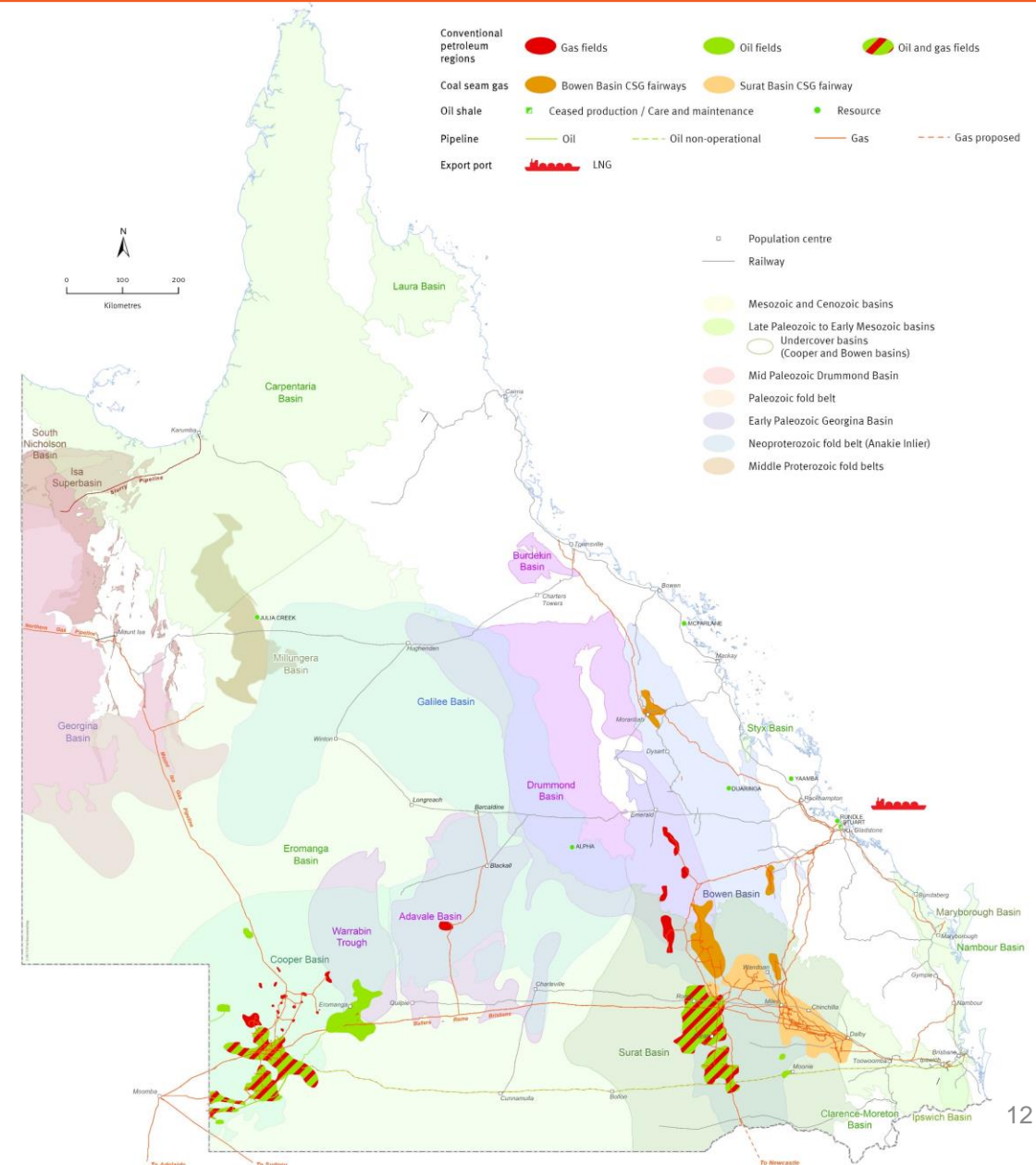


- Land access is a business to business relationship
- A robust and trustworthy regulatory framework is key
- The gas industry must understand and take responsibility for ALL of its impacts on the communities in which it operates
- Trust facts (especially good science), not emotion
- Pursue effective communications and engagement



GFCQ LOOKING FORWARD...

- New / continuing development fronts – intensively farmed areas
- Interface with renewables
- New basins, new opportunities, new challenges
- Production techniques and targets
- One size does not fit all!

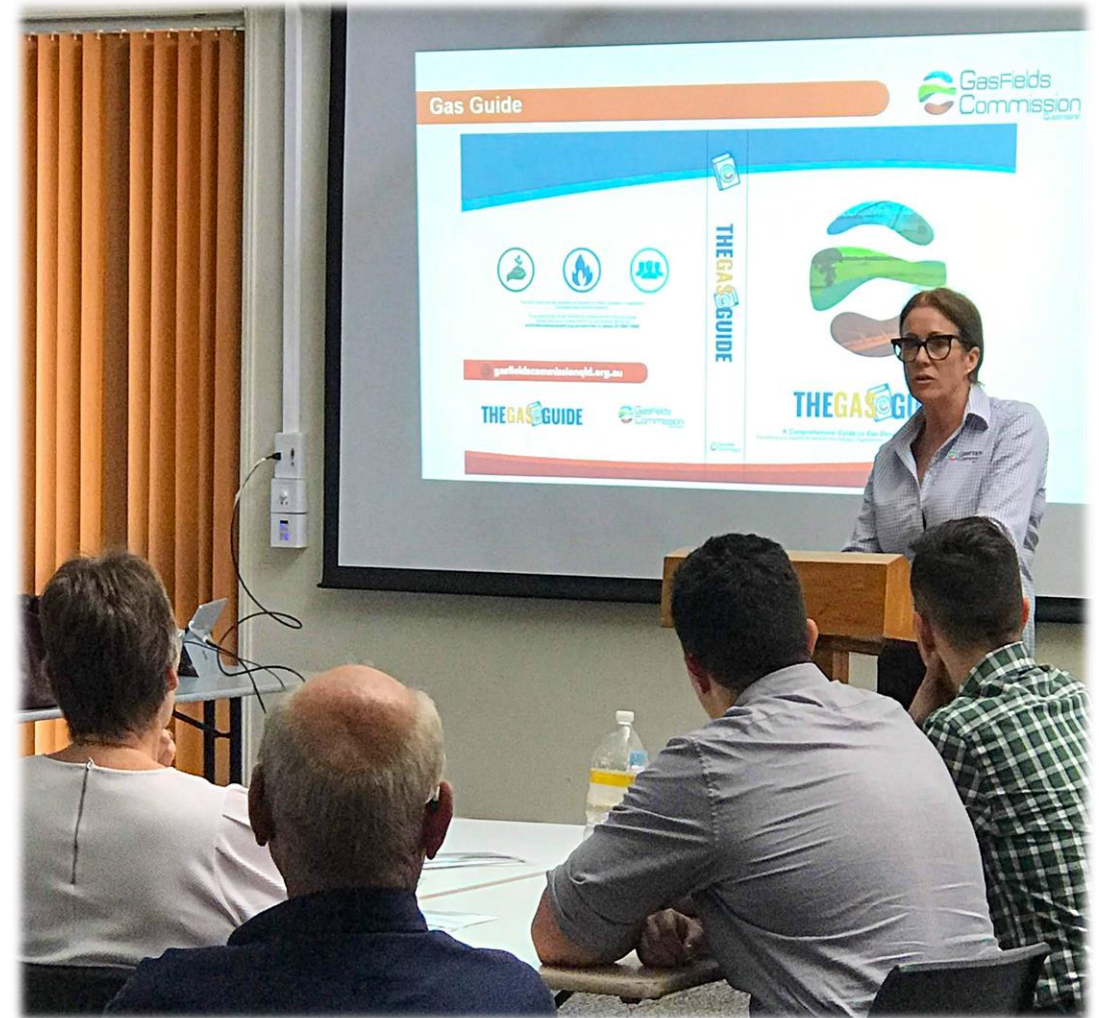


- The Commission is most effective when it can proactively address emerging issues, however due to the current environment most of its recent work has been reactive
- The Commission is seeking to establish better lines of communication with LGAs who are hosting, or soon to host gas development activities, to ensure on ground issues are being appropriately addressed in a timely manner
- The Commission has an extensive toolkit to draw upon when supporting regional communities when gas development activities are being undertaken
- A key factor when operating in a proactive sense comes from being able to identify where regional stakeholders will benefit most from our early engagement
- We appreciate that each community is unique and a ‘one size fits all’ approach does not work, therefore establishing and maintaining relationships with rural landholder, regional LGAs and small businesses allows us to deploy resources effectively and in a timely manner.

- The Commission is currently identifying potential collaborative opportunities to better understand where our Engagement Team resources could be assigned to deliver best possible outcomes for our regional stakeholders
- We fully appreciate that recognising both gas activities (currently underway and likely to occur in the near future) and the unique characteristics of LGAs is key to the success delivery of our engagement activities
- This understanding will allow for more targeted engagement activities, greater understanding of unique LGA characteristics and help maximise the opportunities for coexistence
 - *Without the direct input / feedback from LGAs the GFCQ 2022 Engagement Plan will be less effective and much harder to deliver throughout regional Queensland*
- Essentially we need to know what is affecting each LGA so we can deploy resources appropriately and offer information that allows for our stakeholders to make well informed decisions when it comes to engaging with the onshore gas industry.

HOW DOES GFCQ WORK WITH YOU?

- We are here today to initiate robust communication / collaboration channels that will help improve your communities awareness of gas activities
- The Commission is seeking your help in establishing relationships within your Council and local community - our Engagement Team can come help you identify opportunities and address community concerns
- The Commission can deliver information sessions in your LGA, on a wide range of topics (via face-to-face meetings, or online webinars):
 - Providing information on **what may occur** in your LGA (regarding tenures, resource company activities etc.) – but input from a ‘community level’ is an integral factor in the successful delivery of these sessions.



- Commission plays a central role in improving coexistence outcomes for all stakeholders
- Commission is here to help LGAs manage existing / upcoming gas development activities – collaboration is fundamental to better inform regional communities and landholders
- Commission aims to deliver a more balanced and fulsome reporting via ‘Shared Landscapes – Industry Trends’ – but we need your help (and data) to make this happen
- Commission’s Engagement Team facilitates coexistence by sharing information and collaborating with regional stakeholders – but we are only as effective as our relationships.



SHARED LANDSCAPES REPORT

- Jon Thomas (Director of Policy and Projects): jon.thomas@gfcq.org.au / 0455 322 662
- Lidia Gossmann (Senior Project Officer): lidia.gossmann@gfcq.org.au / 0419 401 023

GFCQ 2022 ENGAGEMENT PLAN

- Lee Coulthard (A/Stakeholder Engagement Manager): lee.coulthard@gfcq.org.au / 0427 797 226

GFCQ GENERAL ENQUIRIES

- Andrew Musgrave (Principal Communications Officer): andrew.musgrave@gfcq.org.au / 0437 181 652





www.gfcq.org.au

